

TULANE ATHLETICS MAP



Points of Interest

Claiborne Avenue Lot— On-Campus Parking Facility

Barney Mintz Field—62.5 yard, turf practice field

Ticket Office

Gate B Entrance—Main entrance to Yulman Stadium

Yulman Stadium—Football Stadium of Tulane Athletics and the Green Wave

Ben Weiner— Closed to vehicle traffic when Diboll Garage is full

STADIUM INFORMATION



Stadium Security Policy

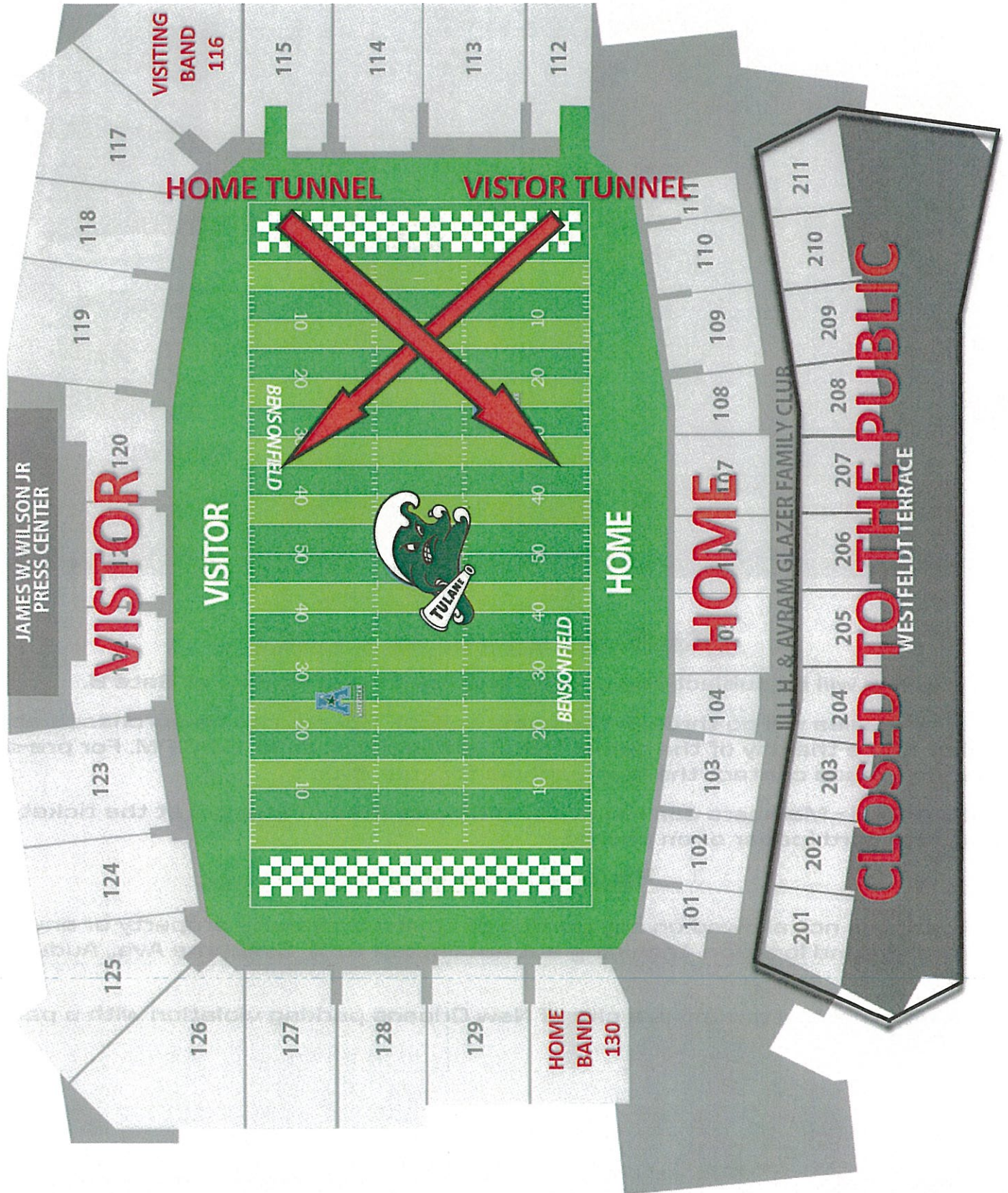
- All patrons will be subject bag checks and hand wand checks at Gate B.
- All ticket sales will go through the home school. Tickets can be purchased at the ticket office the day of the game. Ticket office will open at 5:00 PM. For pre-sale tickets, please contact the home school for your event.
- LHSAA Card - Members can receive two tickets (free of charge) at the ticket office, with card (paper or on phone).

Tailgating Policy

- Tailgating is not allowed on any portion of Tulane University property or any other neutral ground location. Including but not limited to: S. Claiborne Ave., Audubon Blvd.
- Parking in neutral ground is a city of New Orleans parking violation with a penalty of \$75.



YULMAN STADIUM MAP



FAN PARKING



Parking

Parking for the event will be available in the Claiborne Avenue Lot and the Diboll Garage. Parking in these areas will be managed by the Lessee and a per vehicle fee of \$5.00, will be in place two (2) hours before the event starts.

Fan Parking Opens at 5:00 PM

Claiborne Avenue Lot – (Approximately 240 spaces) Open to the public. \$5 cash to park and permit parking.

Diboll Garage– (Approximately 600 spaces) Open to the public. \$5 cash to park.

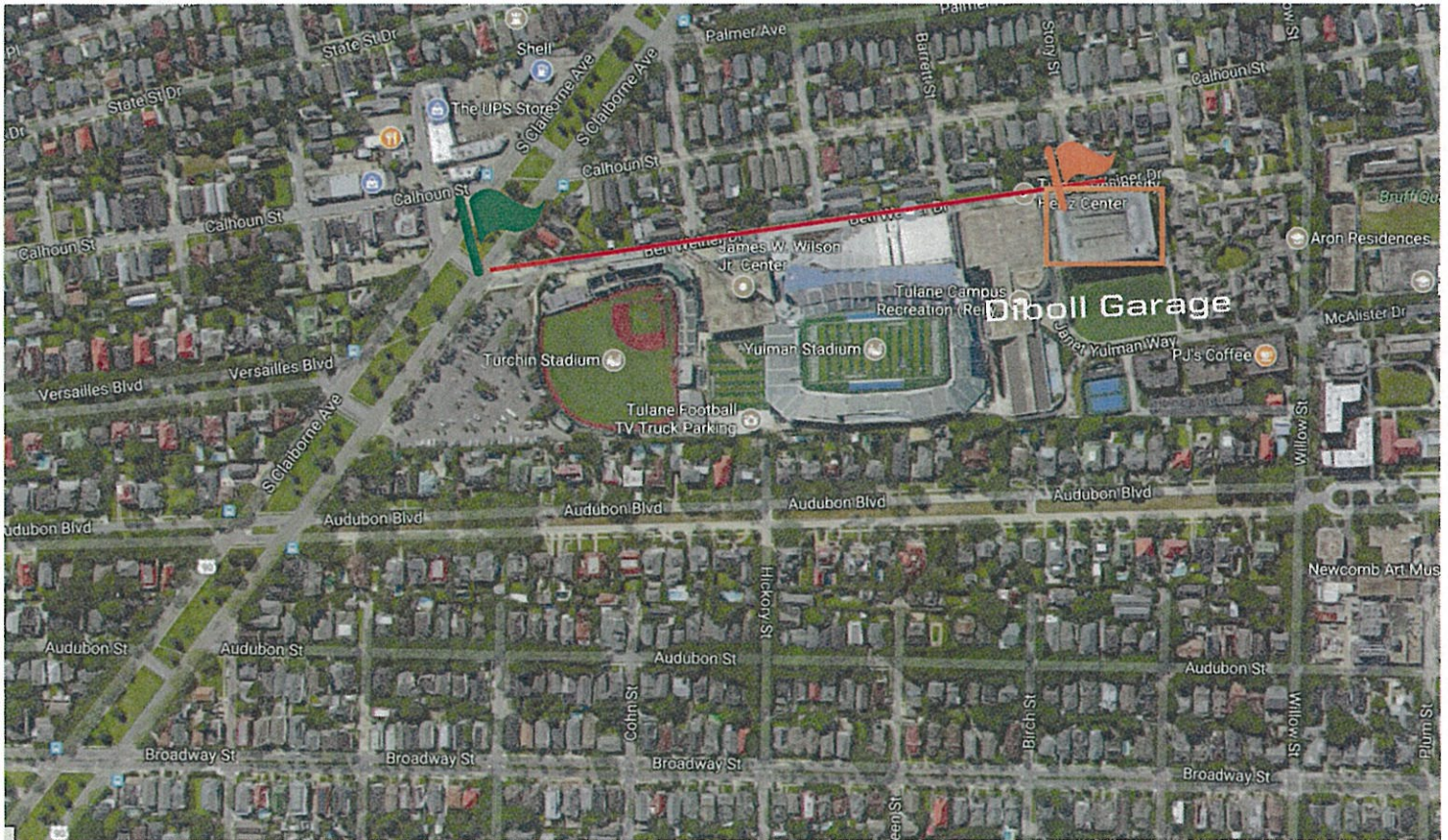
Parking enforcement will be present in the neighborhoods adjacent to Tulane's Campus. Please be aware of the following violations and penalties:

- Parking within 3 feet of a driveway on either side - \$40
- Parking on a sidewalk - \$40
- Parking trailers, campers or 18-wheelers on residential streets - \$500
- Parking adjacent to a neutral ground - towable
- Parking in Residential Parking Permit Zones without a permit for more than 2 hours - \$75
- Parking on the neutral ground, playground or pedestrian mall - \$75
- Parking adjacent to the neutral ground - \$40
- Towing fee - starts at \$161.25, additional fees may apply



FAN PARKING

Directions before Ben Weiner Closure



Directions to Diboll Garage via Ben Weiner

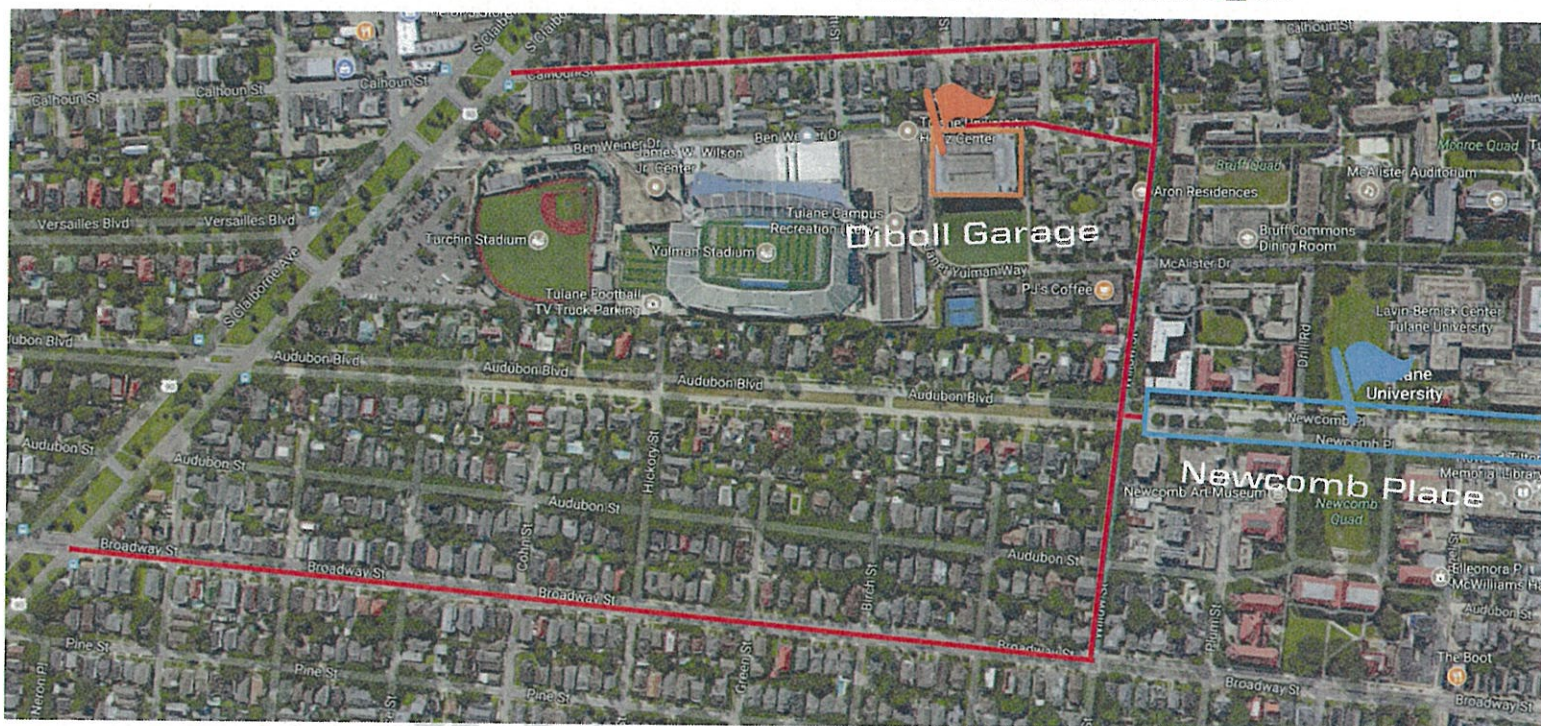
- Turn on to Ben Weiner from S. Claiborne Ave and continue south on Ben Weiner
- Continue down Ben Weiner. You will pass Yulman Stadium on your right
- Go through the stop sign and Diboll Garage will be on your right

Ben Weiner will close to all vehicle traffic when Diboll Garage is full

Diboll Garage—\$5 cash at the garage

FAN PARKING

Alternate Directions to Diboll Garage



Directions to Diboll Garage via Calhoun Street

- Turn right on to Palmer Ave from S. Claiborne Ave
- Take a right on to Willow St. and continue for two blocks
- Turn right onto Ben Weiner Drive and Diboll Garage will be located on your left

Directions to Diboll Garage via Broadway Street

- Turn right on to Broadway St. from S. Claiborne Ave
- Take a left on to Willow St. and continue for four blocks
- Turn left onto Ben Weiner Drive and Diboll Garage will be located on your left

Diboll Garage—\$5 cash at the garage

Directions to Newcomb Place via Broadway Street

- Turn right on to Broadway St. from S. Claiborne Ave
- Take a left on to Willow St. and continue for two blocks
- Turn right onto Newcomb Place

Newcomb Place – No charge

PICK UP/DROP OFF LOCATION



Road Closure

When Diboll Garage becomes full, Ben Weiner Drive will be shut down to all vehicles.

Pick Up/Drop Off Location

The carpool or pick up/drop off location is located on the south bound side of S. Claiborne Avenue on the right hand side.